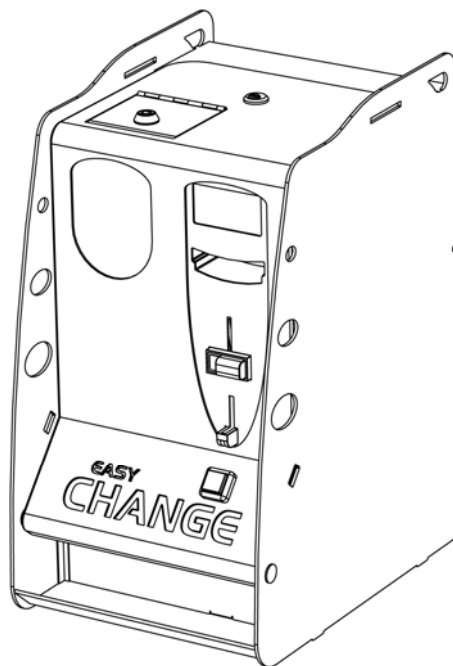




Easy PRO

Change machine

EN



Operating Manual



GUIDE TO THE SYMBOLS IN THE MANUAL

The following symbols are used in this manual
in order to facilitate its understanding.



Important information



Read carefully before use



Warning!

DECLARATION OF CONFORMITY

THE MANUFACTURER: SUZOHAPP
Antonie Van Leeuwenhoekstraat 9
3261 Oud-Beijerland LT NL

DECLARES:

That the product:

TYPE: Change machine
BRAND: Comestero
MODEL: Easy PRO

Complies with the following European directives, including their latest changes, and with the relative national laws applying such directives:

2004/108/CE
2006/95/CE

And that the following harmonized standards have been applied:

EN 55014-1
EN 61014-2
EN61000-3-2
EN61000-3-3
EN62233
EN 60335-2-82

EN

SAFETY INFORMATION

This machine is equipped with safety devices to prevent damage due to short circuits and fire.



These devices must not be bypassed, removed or disabled for any reason.

If the devices must be disabled to carry out maintenance or servicing, operate on the appliance only when the power supply has been switched OFF.



The safety devices have been constructed in compliance with existing regulations.

We recommend the operator to periodically check their correct operation.

Risks deriving from using the machine

The machine is exclusively for indoor use.

If maintained in good operating conditions and installed correctly (according to the instructions of this manual), the machine does not pose any danger for the operator. The personnel loading the dispensers and turning ON the machine after maintenance must take into account that: all moving parts, doors and cash boxes can cause injuries of varying severity, if operated inappropriately; it is a good practice to switch OFF the power supply for any operation carried out when the machine is open (maintenance, etc.). The machine must not be used by persons (including children) which reduced physical, sensorial or mental capacities, or lacking experience or knowledge, unless they are monitored by a person responsible for their safety or they have received instructions on how to operate the machine.

Children must be monitored to ensure they are not playing with the machine.



Electrical hazards: Direct contacts during connection to the main power supply.

Operations carried out by a **qualified technician**.



Crushing hazards due to moving parts in the machine.

The machine must be opened and closed slowly and carefully.

Hazards during machine installation and setup

Follow the machine installation instructions (see Chapter 5 below) so that risks for people and property are minimal.



Crushing hazards during handling and positioning of the machine. Transport of the machine must be carried out by a **technician qualified** for moving loads (forklift operator, etc.).

Caution:

- Use suitable lifting machines and harnesses

-
- Carry out operations in an area free from obstacles and people
 - Before lifting, always ensure the load is stable and carry out all movements carefully, avoiding any oscillation



Electrical hazards: Direct contacts during connection to the main power supply. Operations carried out by a **qualified technician**.

Caution:

- Make sure that the distribution line is sized according to the power supply used by the machine.
- Connect the system to ground before connecting the machine and the accessories.

Hazards during machine maintenance



Electrical hazards: Direct contact with live parts within the electrical cabinet.
Operations carried out by a **qualified technician**.

EN

Caution:

- Service the machine only after the main power supply has been switched OFF.

Signage

The machine is equipped with warning signages located near dangerous areas, showing conventional hazard signs with symbols and/or written messages.



GENERAL HAZARD



ELECTRICAL SHOCK HAZARD



GROUND

GENERAL WARRANTY

Please read the following carefully to understand the general warranty conditions for this product.

ART. 1 - Scope of application

These general terms and conditions shall apply to all the goods and services provided by our company. Placed orders shall imply the full and unconditional acceptance of these general terms and conditions of sale. The contract of sale shall be considered perfected when the Purchaser receives the order confirmation from the Seller.

ART. 2 - Electromagnetic compatibility and safety

Our company certifies that the supplied goods comply with the standards concerning electromagnetic compatibility and safety; mandatory declarations are indicated in detail in the plates and labels affixed on the products and in the technical documentation attached or available at our premises. The recipients of the supply undertake to use or market the supplied goods, ensuring the integrity, completeness and usability of such information.

ART. 3 – Warranty

Except in cases where the mandatory provisions in Leg. Decree No. 206/2005 (“Consumer Code”) or in other relevant laws are to be applied, the goods and services are supplied under warranty by our company for a period of 12 months. This period starts from the date of purchase of the product. The warranty is exclusively limited to the normal operation of the goods supplied and to the result of the service provided. The warranty exclusively involves the repairs or replacement of the goods. Restoration of the goods to their normal operative state shall be carried out in our factory. Although not provided for here, Art. 1512 CC is also applicable in terms of revocation and limitation.

Our company shall not be liable in any way for operation of goods supplied in environmental conditions or technical conditions other than those established by our specifications, usually set out in the technical documentation. Any liability for direct or indirect damage not deriving from a malfunction is expressly excluded.

The warranty is void and null if the purchaser is insolvent in paying the established price.

The warranty does not apply in the following cases:

lack of or improper maintenance, even if carried out by qualified personnel;

repairs or alterations made by the purchaser on his unilateral initiative;

inadequate or irregular voltage in the power lines, insufficient flow rate and abnormal electrical systems;

corrosive action of detergents;

poor or non-functioning software or hardware or loss of data recorded by the purchaser as a result of storms, lightning, high temperature or voltage variations of the electric current, earthquakes, fire, etc.;

with reference to all the electrical components and mechanical plastic moving parts subject to normal wear, which must be replaced during routine maintenance;

where the products have been used in conjunction with or incorporated into equipment or materials whose specifications have not been approved in writing by the selling company;

tampering with the label showing the serial number of the machine;

fault or breakage due to transport, acts of vandalism, natural calamities or wilful damage;

wrong or bad installation of the product;

carelessness, negligence or lack of skill in using the product;

failure to comply with the operating instructions in the technical manual;

interventions for alleged defects or casual checks;

repairs carried out without our authorization.

Malfunctioning of the machine due to the software not being upgraded is not considered a defect. Comestero is not obliged in any way to upgrade the software free of charge or upgrade the mechanical components which may be necessary due to new coins or banknotes being introduced by the Italian and European authorities, when repairing a product that is covered by the warranty. However, such upgrades could still be requested from Comestero and the company is obliged to send a quotation to the customer prior to intervention.

Any repair or tampering carried out on the supplied goods by subjects who are not authorized by us will render the warranty null and void.

We declare to have carefully considered, to the best of our knowledge and manufacturing practices, the issue related to preventing the goods supplied from being violated by persons who intentionally intend to alter their operation. However, we shall not assume any liability for illegal conduct or damage that may result from fraudulent use of the goods supplied. All required repairs not covered by the warranty must be paid for and the Comestero price list shall apply whose updates are regularly communicated.

ART. 4 – Limitation of Liability

Notwithstanding the hypotheses in art. 1229 of the Italian Civil Code and notwithstanding the mandatory provisions of law, for every damage caused directly or indirectly by failures or delays of the Seller or by the purchased products to objects or persons, including but not limited to lost profits and damage to the corporate image, the compensation payable by the Seller shall not exceed, in any case, 10% of the amount paid by the Purchaser for the product that caused the damage.

ART. 5 – Delivery

The goods subject of the supply are considered delivered at the time and in the place they are passed on to the carrier; therefore, our company shall not be held liable for total or

partial shortages, damage or delays related to transport. Upon delivery, the recipient must duly note any errors or damage on the bill of lading. The Purchaser's refusal to accept or collect all or part of the ordered goods does not suspend obligation to pay. The terms of delivery indicated in the order confirmation allow for a grace period of 60 days. Upon delivery, the Purchaser must carry out a complete technical verification of the quality and functionality of the product within eight days. If not, the product shall be considered accepted without reservations or objections by the Purchaser.

ART. 6 - Retention of Title

The supplied goods shall remain the property of our company until full payment of the price has been made. In the event of termination of the contract for non-payment, the Seller is entitled to claim the unpaid items held by the Purchaser, which must be returned at the Purchaser's expense. All sums already paid will be retained by the seller as compensation and penalty.

ART. 7 – Terms of payment

Invoices must be paid in accordance with the agreements and within the deadline specified on the invoice. Any delay in payment will automatically result, without the need of formal notice, the application of interest at the rate stipulated in Legislative Decree no. 231 of 9.10.2002, unless agreed otherwise. If the purchaser delays, each benefit in the terms and conditions that may have been granted shall be deemed null and void and the seller may demand immediate payment of all outstanding amounts as well as of additional orders on receipt of the goods.

ART. 8 – Returns

Return of faulty goods or of goods requiring our assistance must be expressly authorised by us. Therefore, we reserve the right to reject the return or ask you to return the good to another destination other than our headquarters. We shall be liable for the goods only when it will be delivered to the indicated address.

ART. 9 - Applicable law and court of jurisdiction

The supplies regulated by these general terms and conditions are governed by Italian law. Any dispute shall be resolved by the Court of Milan.

Dear customer,

Thank you for choosing a SUZOHAPP product; by following the instructions of this manual carefully you will be able to appreciate and be satisfied by its quality.

Please read the operation and maintenance instructions carefully, in compliance with the safety provisions, before using the machine, and store this manual for future reference.

Table of contents

1. Introduction	13
2. Product presentation	13
3. Warnings.....	13
4. Handling and unpacking.....	14
4.1 Receiving the packaged product	14
4.2 Handling.....	14
4.3 Unpacking.....	15
4.4 Identification of the machine and accessories	15
4.5 Name of Parts.....	16
4.6 Accessories.....	16
5. Installation	17
5.1 Dimensions	17
5.2 Installation on support base (optional)	18
5.3 Installation on “Easy Up” flange (optional).....	19
6. Connections.....	20
7. Starting up the machine.....	21
7.1 Preliminary operations.....	21
7.2 Operation and programming.....	21
8. Programming.....	22
8.1 Preliminary operations.....	22
8.2 Quick maintenance/setup menu	22
A. Automatic hopper emptying	23
B. Accounting information	23
C. Overpay.....	24
8.3 Setup menu	25
A. Peripheral status.....	25
B. Import configuration.....	25
C. Coins accepted.....	26
D. Banknotes accepted	26
E. Coin setup in the hopper.....	27
F. Setting up the token value	27
G. Enabling/disabling the banknote reader	28

H. Enabling or disabling the coin validator	28
I. Language setup	29
I.1 Default language.....	29
I.2 Export language	29
I.3 Import language.....	30
L. Automatic dispensing	30
M. Reset of default conditions	30
N. Automatic hopper emptying.....	31
O. Date and time setup	31
P. Setup Password	32
P.1 Enabling/disabling the password	32
P.2. Change of the password	32
Q. Saving configuration onto the SD Card	33
8.4 Accounting menu	34
8.5 Information on using the SD Card.....	36
A. Introduction	36
B. Extracting and inserting the SD Card.....	37
C. Viewing data contained in a SD Card on a Personal Computer	37
D. Importing firmware updates from a PC on the change machine.....	37
9. Bootloader and Firmware update	37
9.1 Preparation	38
9.2 How to check the onboard software version in use on the machine	38
9.3 How to update Bootloader.....	39
A. How to extract the new Bootloader.....	40
B. How to copy Bootloader on the SD Card.....	40
C. How to update machine Bootloader.....	42
9.4 How to update Firmware	44
A. How to download and extract the new Firmware	45
B. How to copy Firmware on the SD Card	45
C. How to update the machine Firmware	47
10. Care and maintenance	49
10.1 External maintenance and cleaning	50
10.2 Internal maintenance and cleaning.....	50
10.3 Inactivity periods	50
11. Diagnostic and technical support	51
12. Technical specifications.....	52
13. Spare parts.....	53
13.1 Easy PRO general assembly	54
13.2 Door group.....	55
13.3 NV10 + RM5 HD front group.....	57
13.4 NV9 front group.....	58
13.5 Display group	59
13.6 Silkscreen	59

13.7 Cover caps.....	60
13.8 Cables	60
14. Appendixes	61
14.1 Decommissioning and disposal.....	61

1. Introduction

This manual and its annexes provide all the necessary information for a correct installation of the product and all its parts, as well as for its correct use and maintenance. The information contained in this manual can be modified without prior notice and do not constitute a commitment on behalf of SUZOHAPP.

The information contained in this manual has been collected and verified with the utmost care; however, SUZOHAPP has no liability arising from its use. The reproduction of any part of this document, even partially, in any form without express authorization by SUZOHAPP, is prohibited. When not specified otherwise, all references to companies, names, contacts and addresses used in the examples are purely fictional and have the aim to illustrate the operation of the product.

When you want to learn more about how to use the product or you are unsure how your device should function, see the support pages at eu.suzohapp.com

EN

2. Product presentation

Easy PRO is a secure and versatile change machine that can be installed easily and integrates perfectly in every type of environment thanks to its design; today it is even more secure and performing thanks to the new generation of peripherals connected via ccTalk. It is equipped with a banknote reader, a new large size display and a SD Card to export accounting data and for the useful function of “machine cloning” which allows to export configuration parameters to other machines. Its programming is intuitive and does not require an external programmer. Its structure is designed to resist over time and is particularly strong against vandals and thieves, due to the thick steel plate and the safety tube lock with three locking points. It is equipped with two special chrome plated steel bars that make it even more resistant to thefts. Maintaining compact dimensions, Easy PRO also boasts a large coin capacity thanks to the extension applied to the dispenser.

3. Warnings



Read this manual carefully before installation. Knowledge of the information and instructions of this manual is fundamental to use the product correctly. Check upon receipt that the package and the product have not been damaged during transport. Take care with the electrical connections. Faults due to failure to follow the warnings of this publication are not covered by warranty. Significant situations that need to be followed strictly are signalled by specific symbols in this manual.

4. Handling and unpacking

4.1 Receiving the packaged product

Check upon receipt that the product has not been damaged during transport. If any damage is noticed notify the transporter immediately.

After transport the package must be complete, that is, it must NOT:

- show dents, signs of shocks, deformation or breakages of the container
- show areas that are wet or signs that would point out to the fact that the casing has been exposed to rain, frost or heat
- show signs of tampering

Check that the content of the package matches the order.

4.2 Handling



To avoid damage to the machine we recommend moving it only within its original package, using suitable handling machines. Take care to follow the handling instructions printed on the box. After initial inspection, replace the machine in its packaging to transport it to the final installation area.

We recommend:

- not to drag the machine
- not to overturn or lay down the package horizontally during transport and handling
- not to bump the machine
- not to leave the machine (even if still in the package) under weather agents

4.3 Unpacking

After being tested and equipped the machine is delivered within different packages, one for the change machine and one for the base, made of corrugated carton, which ensure it is protected during transport and handling.

To facilitate loading/unloading the product, also by means of earth moving machines (transpallets), the boxes sit on an appropriate wooden pallet (up to two machine units per pallet).



Follow the instructions printed on the box to unpack the machine. Both the carton package and the pallet meet the standards for recycling and disposal (follow current local regulations).

4.4 Identification of the machine and accessories

Figure 1 shows the location of the identification label showing the main operating and identification characteristics of the machine. The serial number printed in the appropriate field is particularly important. Always mention this number any time you require service, parts, repairs or information relative to the operation of the machine.

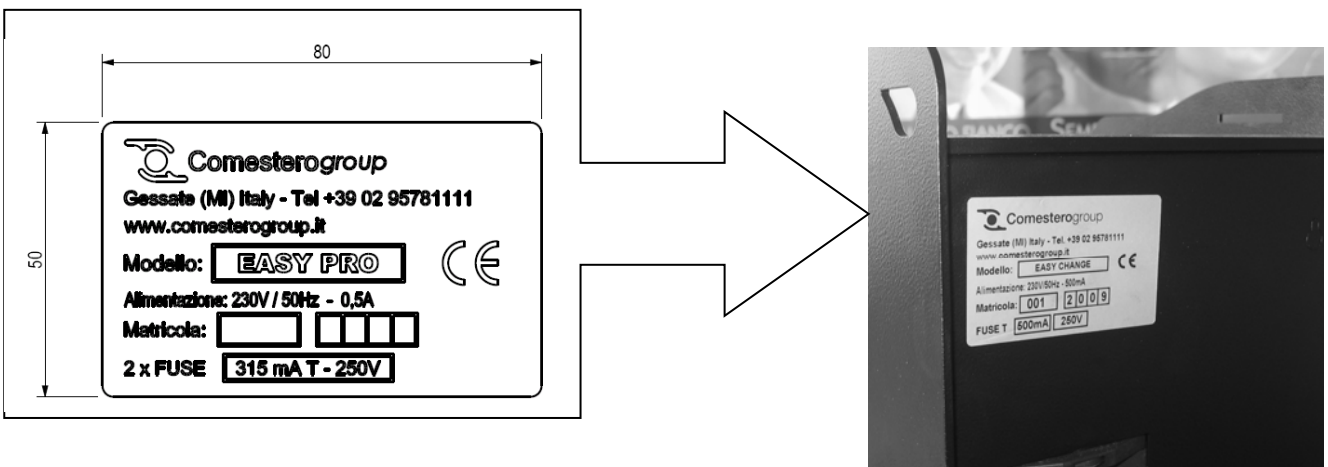


Fig. 1



The machine identification label must always be clearly readable. It is prohibited to remove it or tamper with the data printed in it. If damaged or lost, request a new replacement label from the manufacturer. The label is applied to the machine as shown in Figure 1.

Please remember that the warranty is tied to the machine identification number.

4.5 Name of Parts

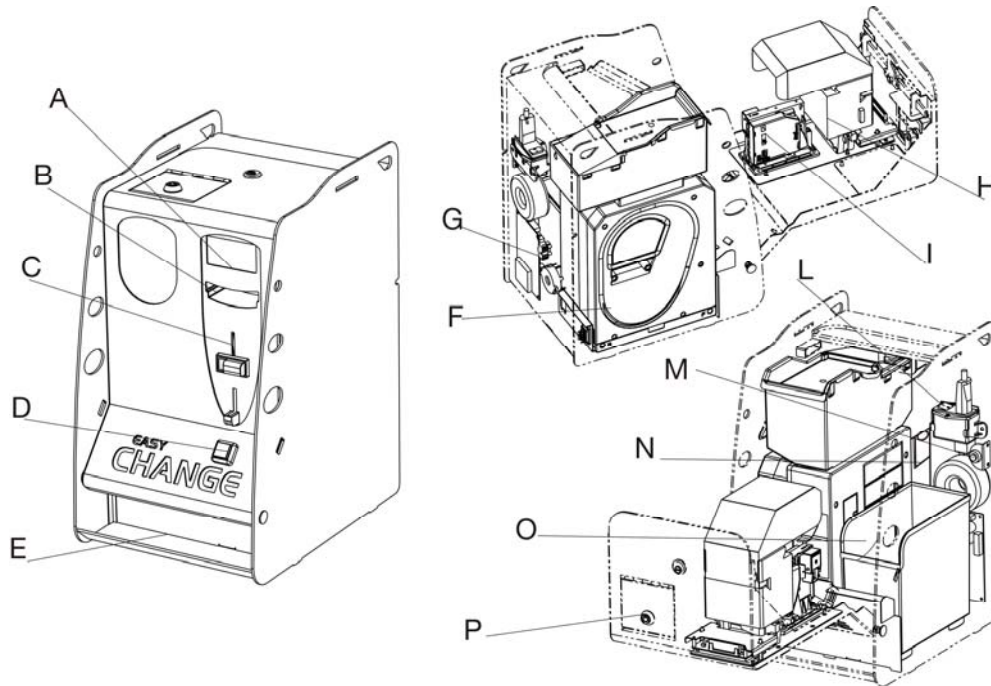


Fig. 2

- | | | | |
|---|------------------|---|----------------------------|
| A | Display | H | Banknote reader |
| B | Banknote input | I | Electronic coin validator |
| C | Coin input | L | Power ON button |
| D | Selection button | M | Programming button |
| E | Coin dispensing | N | SD Card slot |
| F | Hopper | O | Cash box |
| G | Electronic board | P | Opening for hopper loading |

4.6 Accessories

The product includes the following **standard accessories**:

- Operating manual
- Power cord
- Compartment keys

Two keys are provided for each of the two locks on the machine.

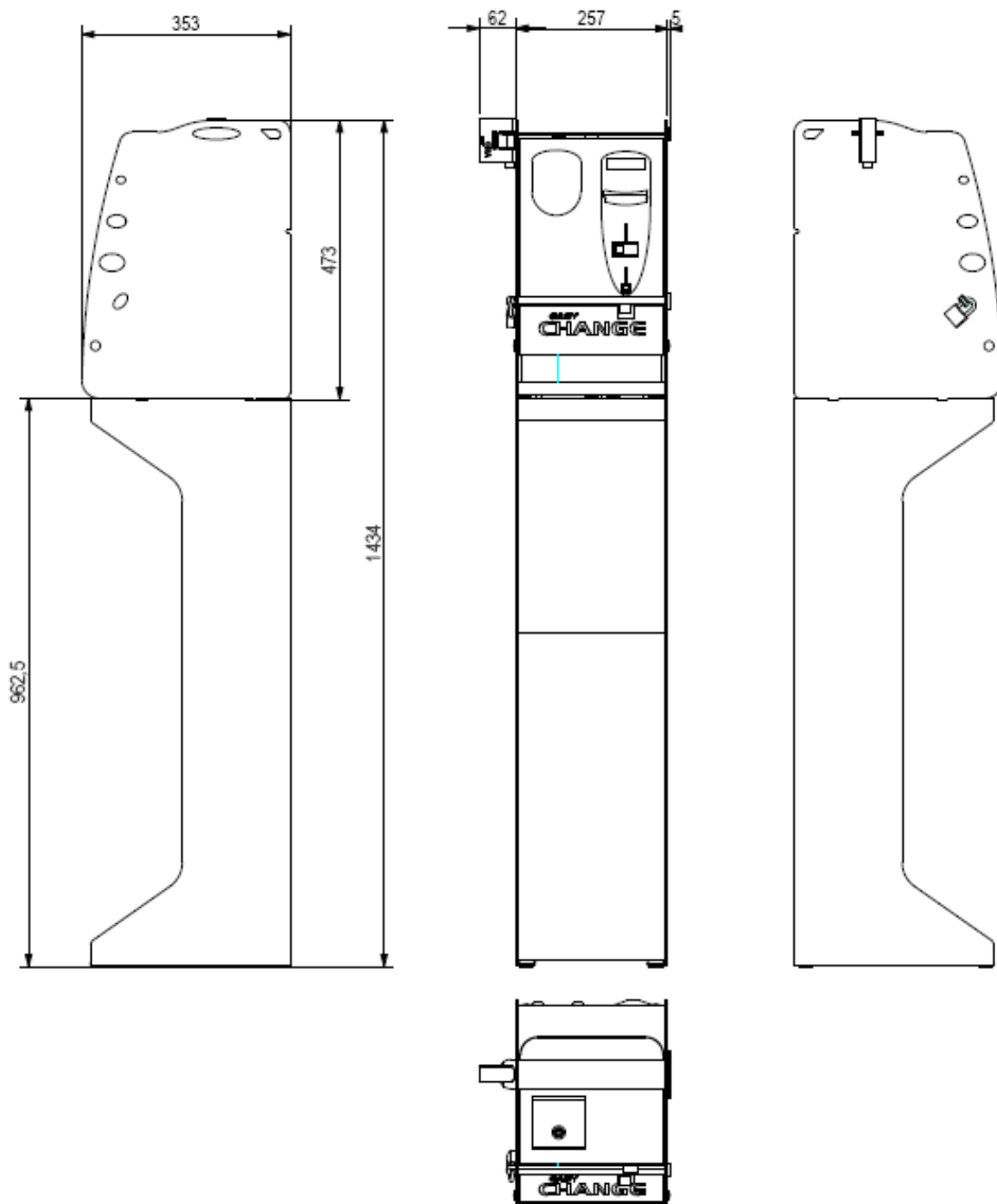
We recommend creating two sets of keys and storing spare keys in a safe place other than the place normally used for the service set of keys.

Furthermore, we recommend noting down the serial number engraved on each key so that a duplicate key can be requested to Comestero if the key is lost.

5. Installation

5.1 Dimensions

The following drawing shows the dimensions of the machine to facilitate its placement and installation. The Easy PRO change machine can be installed in three different ways: on a countertop, on a support base (optional) (Figures 3-4), or wall-mounted on the appropriate “Easy-up” flange (optional) (Figure 5).



EN

Fig. 3

5.2 Installation on support base (optional)

- Place the base where you want to install the machine
- Lift and place the change machine onto the base (Figure 4), so that the three holes located on the base match the three nuts on the change machine
- Screw in three M6 screws with a screwdriver (Phillips head)
- Connect the plug to the power socket to activate the change machine



Fig. 4

5.3 Installation on “Easy Up” flange (optional)



Before installing the Easy-up kit, read the following carefully.

- Remove Easy-up from the box.
- Lean the Easy-up kit against the wall, at the desired height.
- Mark the centre of the four holes of the Easy-up on the wall with a pencil.
- Make sure that, once the Easy-up is fixed to the wall, it remains in a perfectly vertical position.
- Drill four holes in the wall with a tip of adequate dimensions for the supporting brackets.
- Mount Easy-up onto the wall with a screwdriver and through the four supporting brackets (Figure 5)

EN

Prepare the Easy PRO change machine in this way:

- Remove the metal membrane over the three back holes on the back of the Easy PRO with a flat head screwdriver
- Unscrew and remove the internal guard with a size 7 box spanner
- Screw the padlock bracket under the change machine with two screws (supplied with Easy-up) with a Phillips head screwdriver
- Place the Easy PRO over the shelf of the Easy-up so that the two hooks of the Easy-up fit onto the two back slots of the Easy PRO. Make sure the power cord of the Easy PRO exits from the bottom right opening and the padlock bracket is inserted in the central slot
- Tighten the screw supplied with the Easy-up from the inside of the Easy PRO with a size 4 Phillips head screwdriver
- Replace the internal guard of Easy PRO
- Make sure the entire installation has been carried out correctly and the change machine is stable and safe
- For greater safety, a padlock can be inserted in the ring located under the Easy-up

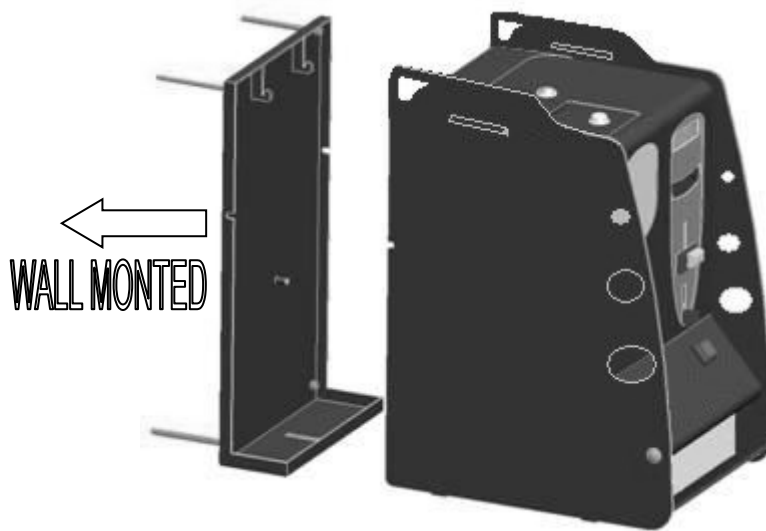


Fig. 5

6. Connections



All electrical connections are already installed except the power supply. Before connecting to the grid, make sure the main switch of the equipment, on the front compartment inside the change machine, is in position “0” (OFF), as shown in Figure 6 below.

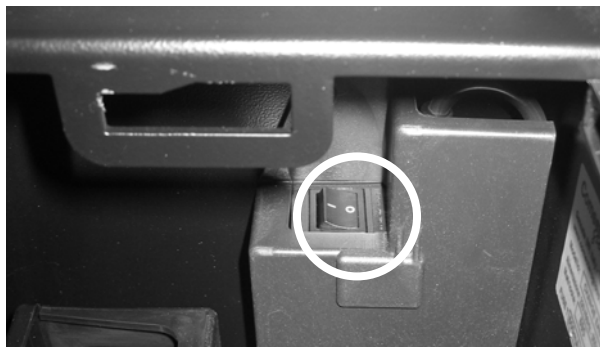


Fig.6



Check that the power socket to which the machine is going to be connected has an electrical rating suitable to the machine and that it is protected by a residual current device with suitable rating. Plug the machine to the grid by means of the supplied cable (the cable, already plugged to the main switch of the machine, is located in the rear part of the machine).

For installation, please refer to the specific regulations on protection from electrical arcing.

7. Starting up the machine

This machine is delivered from the factory with a standard configuration that can be modified (see section 7.2 below for details).

7.1 Preliminary operations



To exit from the EMPTY condition, before starting the machine, fill the dispenser.

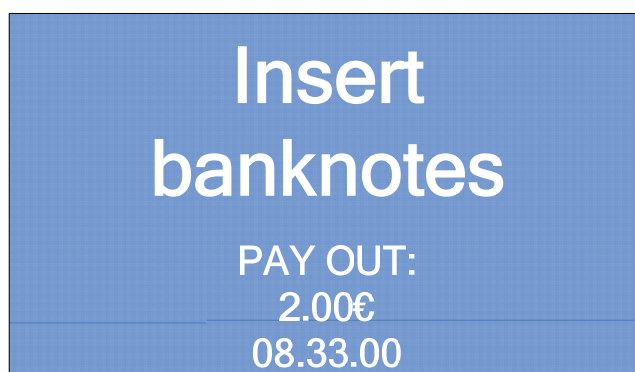
In this way the various payment systems are enabled and the machine is ready.

To fill the hopper, open the top door so that you can access the dispenser and pour the coins in the appropriate compartment.

7.2 Operation and programming

Turn ON the change machine with the switch (point L in the Figure 2 above) located inside it. When the machine is ON, the display (point A in the Figure 2 above) will show the version of the program, which will automatically disappear after a few seconds. Press the button on the front door and the display will cycle through the messages for the users in one of the four pre-set languages.

Easy PRO is equipped with 1 coin/token dispenser, a banknote reader and a coin validator, if installed. While waiting for money to be inserted, the change machine shows:



The change machine is equipped with a backlit dispensing button (point D in the Figure 2 above) to get change.

The following is the standard operation of the change machine: if settings have been adjusted differently than those set in the factory, the machine could behave differently than as follows (see the “Programming” chapter below).

Unless otherwise required by the customer upon purchase, the machine will be programmed and set up as follows:

- Language: Italian/English
- Value table.
- Currency: Euro.
- Banknote reader type: NV10
- Reader setup: Parallel with 5/10/20/50 Euro
- Coin validator type: Comestero RM5 HD
- Coin validator setup: ccTalk full with 0.05/0.10/0.20/0.50/1/2 Euro
- Dispenser type: Suzo EV1000 std. dispenser

8. Programming

8.1 Preliminary operations

To change the operation settings of the change machine, access the setup menu by pressing the setup button (point M in the Figure 2 above) inside the change machine. All setup operations are performed through the external selection button (point D in the Figure 2 above) and the display (point A in the Figure 2 above). Easy PRO has a quick setup menu (called quick menu) which includes the most common maintenance and configuration functions, as well as a complete menu divided into accounting and setup menu. Navigation through the quick, accounting and setup menus is made through a briefly pressing or keeping pressed the selection button (point D in the Figure 2 above) placed on the front door of the change machine. Consider that a short pressure is usually associated to navigation while a longer pressure is normally used to select/confirm.

8.2 Quick maintenance/setup menu

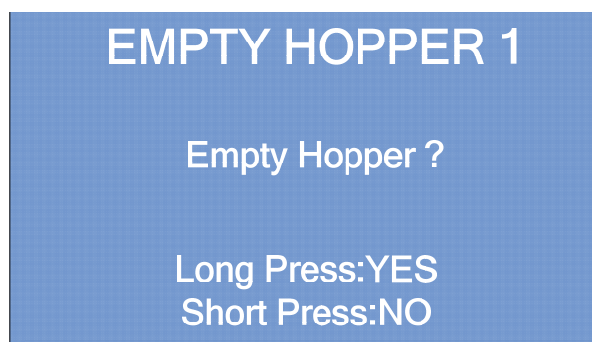
The quick setup menu includes the most common maintenance setup functions used by the “manager”. To enter the menu, set the change machine in programming mode by pressing the setup button (point M in the Figure 2 above) inside the compartment of the change machine. So that the display will show the first screen of the quick maintenance and setup menu.



To enter the menu press the selection button briefly

A. Automatic hopper emptying

Then the display will show the first screen relative to the hopper emptying.



Keep pressed the selection button to start the automatic hopper emptying procedure, or press the button briefly to go to the next screen.

NOTE:
This procedure can be interrupted at any moment during hopper emptying, by pressing the button again (short press).

B. Accounting information

The second quick menu item is the partial accounting screen, where general information on earnings and dispensing can be viewed.



With a short pressure of the selection button you can move to the next screen, while a long pressure allows you to clear the partial accounting data.

The third item of the quick menu is the total accounting data:



This menu screen is quite similar to the partial accounting data screen. When RESET is selected, by a long pressing of the button, the total accounting data are cleared; while by a short pressing you can move to the next screen.

C. Overpay

Every time an overpay takes place, that is a failure to change coins, the change machine records the event in the log so that all overpays can then be shown in a list. With a short pressure of the selection button you can scroll through the list, while with a long pressure the data can be cleared.



At the end of the quick menu the following screen is shown:



Press the selection button briefly to restart with the quick menu, or keep it pressed to access the complete menu.

8.3 Setup menu

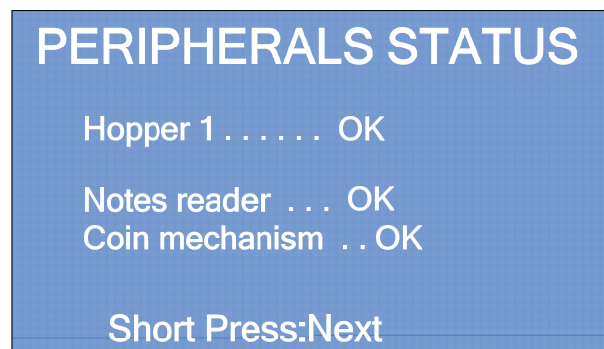
From the initial screen of the complete menu, press the selection button briefly to enter the setup menu.



A. Peripheral status

The first screen of the complete menu shows the status of all peripherals installed in the change machine. If the peripheral is operating correctly, it will be marked with “OK”, otherwise an “Alarm” message will be displayed next to the corresponding peripheral. Press the selection button briefly to move to the next screen.

EN



B. Import configuration

From the “Import configuration” screen, it is possible to import the machine configuration, saved on a SD Card, onto the change machine.



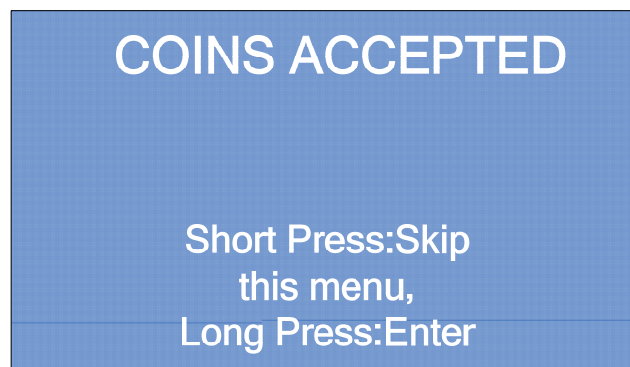
NOTE:

This function can be accessed only if a SD Card, with configuration data inside, is inserted in the appropriate slot (point N in the Figure 2 above).

To import the setup parameters into the change machine, keep pressed the selection button; otherwise press it briefly to move to the next screen without importing data.

C. Coins accepted

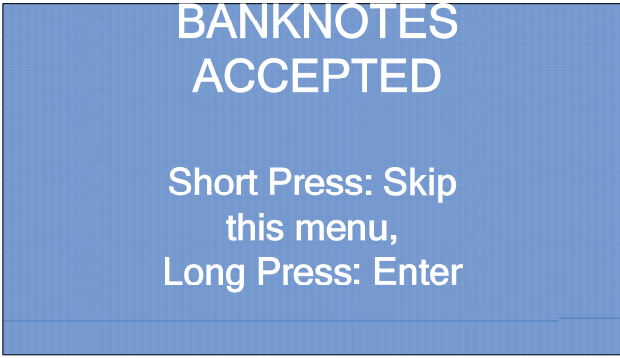
From the “Coins Accepted” screen, keeping the selection button pressed it is possible to enter the menu that allows you to enable or disable the coin types to be accepted by the change machine (if a coin validator is installed).



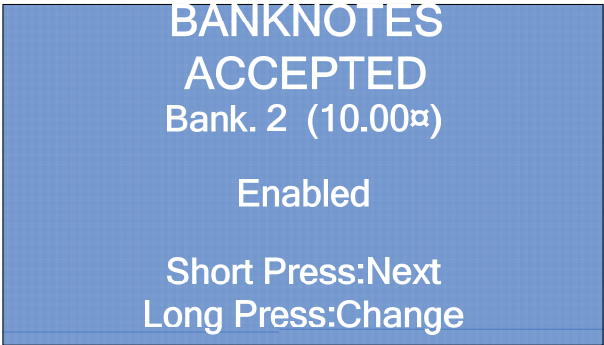
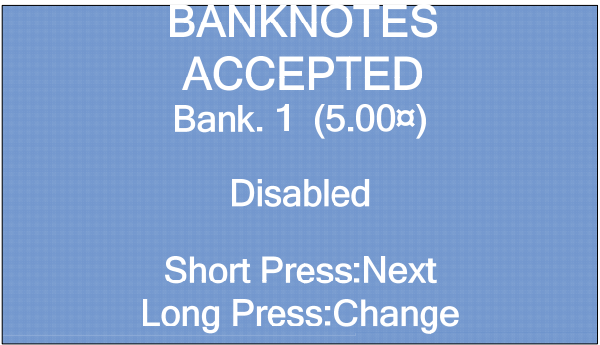
Press briefly to ignore this menu. Keep the selection button pressed to toggle the status between Enabled and Disabled and viceversa, with regard to the selected coin. Here below an example for Coin 1 (1.00€) and Coin 2 (2.00€).

**D. Banknotes accepted**

From the “Banknotes accepted” screen, keeping the selection button pressed, it is possible to enter the menu that enables or disables the denominations of banknotes to be accepted by the change machine (if a banknotes reader is installed).



Press briefly to skip this menu. Keep the selection button pressed to toggle the status between Enabled and Disabled or viceversa, with regard to the selected banknote. Here below an example for Banknote 1 (5.00 Euro) and Banknote 2 (10.00 Euro).



E. Coin setup in the hopper

To ensure the change machine operate properly, the type of coins filling the hopper must correspond to the value set in the “Coin Hopper” screen. Here below an example for Coin 1 (2.00 Euro) and Coin 2 (1.00 Euro).



Press briefly to enter the next menu item. Keep pressed to change the coin value.

F. Setting up the token value

To assign a value for the type of token inserted in the hopper, keep the selection button pressed in the two screens below.



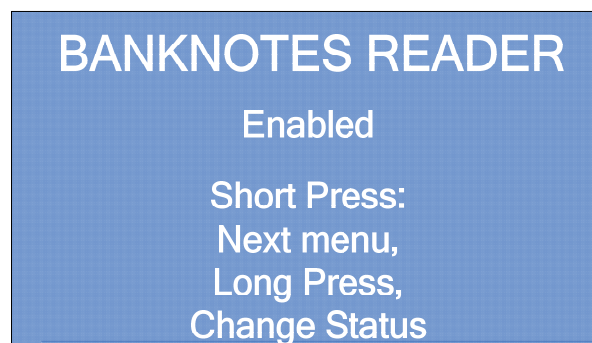
For both menu screens above, the display will show the screen you can see here below :



Through this screen, you can set an Euro value for the token.

G. Enabling/disabling the banknote reader

The installed banknote reader may be enabled/disabled by means of the “Banknote reader” screen.



Press briefly to enter to the next screen. Keep pressed to toggle the status of the reader between Enabled and Disabled or viceversa.

H. Enabling or disabling the coin validator

The installed coin validator may be Enabled or Disabled by means of the “Coin mechanism” screen.

COIN MECHANISM

ENABLED

Short Press:
Next menu,
Long Press:
Change status

Press briefly to enter to the next screen. Keep pressed to toggle the status of the coin validator between Enabled and Disabled or viceversa.

I. Language setup

The operating parameters relative to the languages managed by the change machine can be set up in the following screens.

I.1 Default language

The default language used by the change machine to communicate with the end-user and the maintenance operator, can be chosen in this screen. It is possible to choose from four languages (Italian, English, Spanish or French).

EN

DEFAULT LANGUAGE

English

Short Press:
Next Menu,
Long Press:
Change Language

Press briefly to enter to the next screen. Keep pressed to change language.

I.2 Export language

The language pack included in a change machine of the “PRO” series can be exported into a change machine of the same series through the included SD Card, using this screen. The language pack will be written onto the onboard SD Card.

EXPORT LANGUAGE

Export language?

Short Press: NO
Long Press: YES

Press briefly to enter to the next screen. Keep pressed to export the language pack onto the onboard SD Card.

I.3 Import language

The language pack included in a change machine of the “Pro” series can be imported into a change machine of the same series by means of the included SD Card using this screen. The language pack will be downloaded onto the SD Card from the CPU of the change machine.



Press briefly to access the following menu. Keep pressed to import the language pack from the onboard SD Card onto the CPU.

L. Automatic dispensing

Automatic dispensing is the automatic dispensing of change when a banknote is inserted, without the need to press any button. Just insert the banknote into the reader and then change happens.



Press briefly to enter to the next screen. Keep pressed to toggle the status of the automatic dispensing between Enabled and Disabled or viceversa.

M. Reset of default conditions

The factory settings (default values) can be reset through the “Load default” screen.

LOAD DEFAULT

Load Default?

Short Press: NO

Long Press: YES

Press briefly in order not to reset the default settings and to move to the next menu screen. Keep pressed to reset the default settings and move to the next menu screen.

N. Automatic hopper emptying

By means of the “Empty hopper” screen the hopper can be automatically emptied.

EMPTY HOPPER1 1

Empty Hopper?

Long Press: YES

Short Press: NO

EN

Keep pressed the selection button to start the automatic hopper emptying procedure, or press the button briefly to go to the next screen.

NOTE:

The procedure can be interrupted at any time during hopper emptying by pressing the button again (short press).

O. Date and time setup

The date and time can be set up by means of the “Date and time” screen.

SET DATE AND TIME

Do you want change
date and hour ?

Long Press: YES

Short Press: NO

Press briefly to enter to the next menu screen. Keep pressed to enter into the submenu where you can set (or modify) time and date.



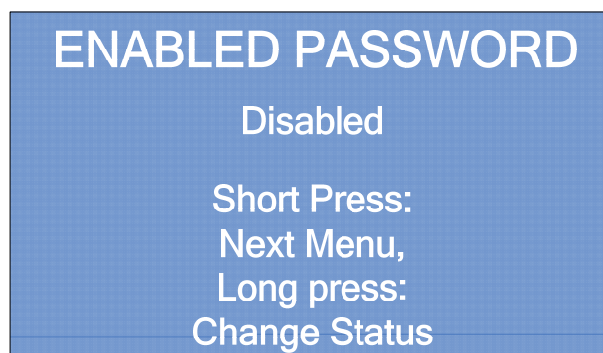
Press briefly to enter to the next menu screen. Keep pressed to increase the digit.

P. Setup Password

The operating parameters, relative to the password protecting the access to setup and maintenance menus, can be set up in the following screens.

P.1 Enabling/disabling the password

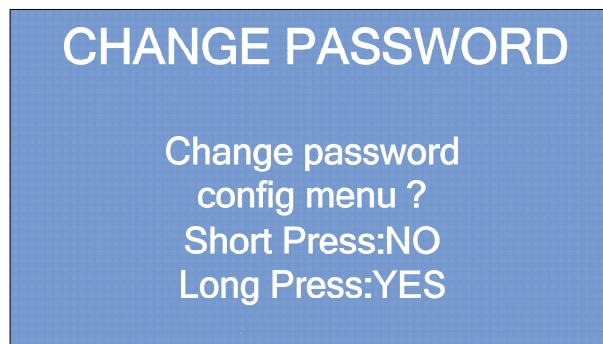
From the “Enabled Password” screen you can Enable or Disable the password request to access the setup and accounting menus.



Press briefly to enter to the next screen menu. Keep pressed to toggle the status between Enabled and Disabled or viceversa.

P.2. Change of the password

The password can be changed from the “Change password” screen:

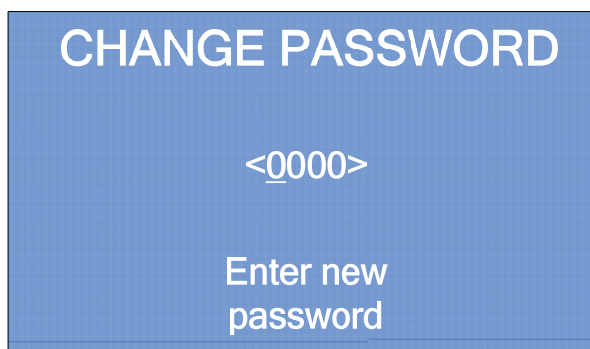


Press briefly to access the following menu. Keep pressed to change password.

If you want to change the password, the old password must be entered first, or the **default password (1111) must be entered** if the password has never been changed before. The display will show:



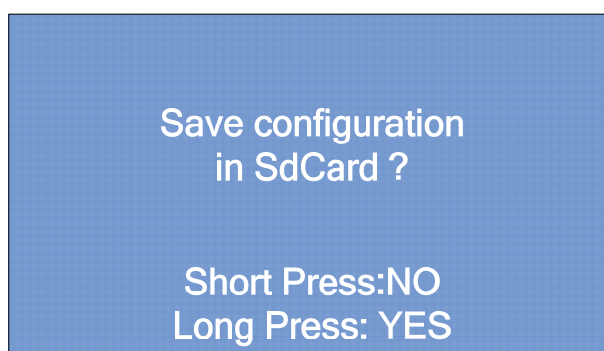
Press the button briefly to move the cursor from one digit to the other, keep it pressed to increase the selected digit. Finally keep pressed to confirm and move to the next screen. The new password is then requested:



Press the button briefly to move the cursor from one digit to the other, keep it pressed to increase the selected digit. Finally when you are at the last digit, keep pressed to confirm and move to the next screen.

Q. Saving configuration onto the SD Card

All modifications made to the configuration parameters can be saved onto the SD Card. When the configuration operations have ended, the display will show the following screen:



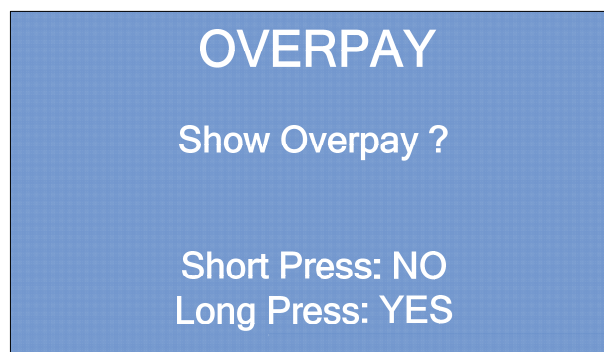
With a short pressure of the selection button the setup will not be saved and you will exit from the menu; otherwise with a long pressure the setup will be saved onto the onboard SD Card and you will exit from the menu screen.

8.4 Accounting menu

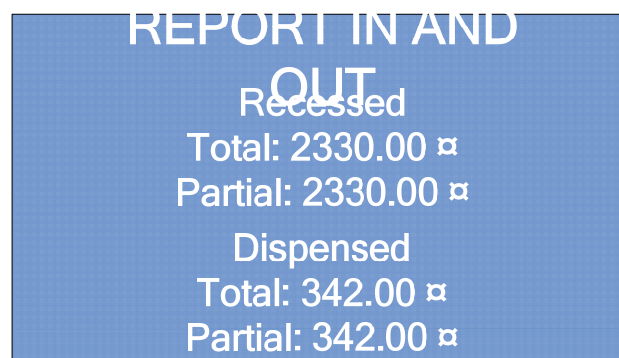
Information on accounting data can be viewed, in terms of money collected and money dispensed, by means of the accounting menu. Accounting is divided into partial accounting and total accounting. From the complete menu keep the selection button pressed to access the accounting menu.



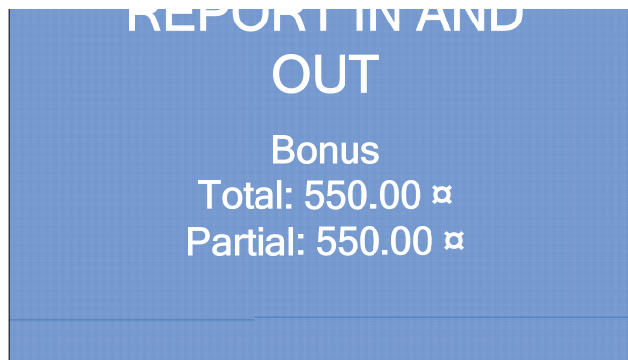
The display will show the first accounting screen, which it is relative to the overpays that have been occurred.



The display will show the second accounting screen, which shows a list of partial and total accounting data for incoming and outgoing money.



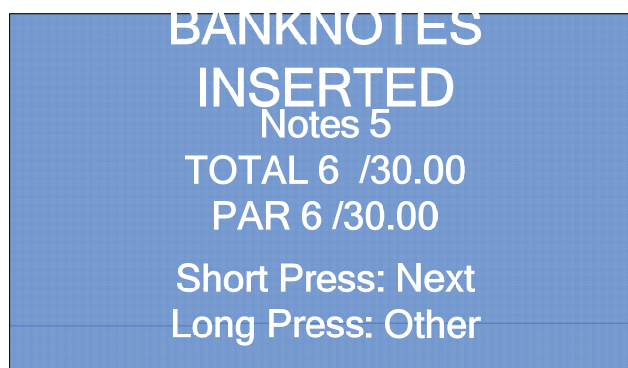
The following screen, relative to bonuses, will be shown by pressing the selection button briefly:



The following screen, relative to non-dispensed money, will be shown by pressing the selection button briefly:



The following screen, relative to detailed accounting data of inserted banknotes, will be shown by pressing the selection button briefly:



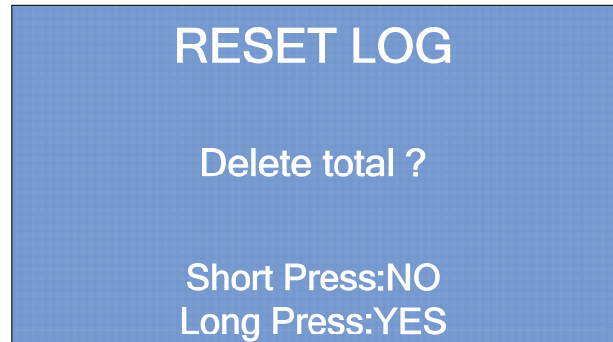
Press briefly to move to the next screen, keep pressed to see the detailed accounting for other banknote denominations.

The same type of information is available for coins in the following screen.



Press briefly to move to the next screen, keep pressed to see the detailed accounting for other types of coins.

The accounting data stored can be reset in the “Reset log” screen. Each short pressure will show one of the following alternatives:



Clear partial: to reset partial accounting data

Clear total: to reset total accounting data

Exit: to move to the next screen

Keep the button pressed to confirm the selected function.

All accounting data can also be exported on the onboard SD Card and then processed on a personal computer.



Keep pressed to export accounting data, press briefly to exit.

8.5 Information on using the SD Card

A. Introduction

An SD Card is a compact storage unit with variable storage capacity. All change machines that belong to the new “Pro line” series, are equipped with an electronic board with a slot where a SD Card, supplied with the machine, is already inserted. A series of files working only on Pro series change machines of the same model can be stored on the SD Card, following the procedures explained above.

B. Extracting and inserting the SD Card

The SD Card supplied is already inserted in the appropriate slot of the change machine CPU board.

To extract the SD Card from its slot, press on the free side:

- a spring loaded system will release the card and then you will be able to extract it.
- when you are repositioning the SD Card into the slot, press it until it clicks.

C. Viewing data contained in a SD Card on a Personal Computer

All various data contained in a SD Card can be viewed on a PC with Microsoft Excel or another equivalent software (like the open source Libreoffice Calc).

The PC must be equipped with a standard SD Card reader. If the PC does not have an inbuilt reader, a lot of SD Card readers are available on the market (contact your local dealer for further information).

After inserting the SD Card into the reader and after the PC recognizes it correctly, please go to “My Computer” and select the SD Card (generally recognized as “Mass storage device”); clicking on it you can “open” the device SD and start a program suitable to view its contents. For example, if accounting data, or the history log, have been stored on the SD Card (see the “exporting accounting data” section in this manual), they can be viewed with Microsoft Excel, Libreoffice Calc or an other open source equivalent software.

D. Importing firmware updates from a PC on the change machine

To import a Firmware update onto the change machine, the update must be copied onto the SD Card using a PC (for further detail see the previous section). Once the update has been “loaded” into the SD Card, you only need to insert it into the CPU board slot of your Easy PRO change machine. When you will turn ON the machine, a special sound will warn that the update has been concluded.

9. Bootloader and Firmware update

This chapter explains how to update the software (Bootloader and/or firmware) on board the Easy PRO change machine.



It is not necessary to save the configuration or the accounting before making updates. The procedures to update the Bootloader and/or Firmware will keep unchanged both the configuration and the accounting of the machine.



Since the update of the Bootloader is a delicate operation, the update files will be provided only upon specific request by the customer. Call the SUZOHAPP after-sales service at the following telephone number (+39) 0295781111 to get a copy of the file.

Easy PRO is designed to avoid any kind problems during the update. The machine is able to perform the operation in a fast and very easy way both for the Bootloader and the Firmware.

9.1 Preparation

To update the Easy PRO on board software make sure to have at your disposal the following material:

- One SD Card approved by Comestero (you can use the card already available on board the change machine)



The SD Cards available in commerce with same capacity have all features and performances different from each other and sometimes even contrasting with the declared characteristics. Therefore, to preserve the functionality and the performances of the Easy PRO, when it is necessary, use only the SD Card approved and supplied as a spare part by SUZOHAPP.

- One built-in or externally card reader connected to the PC
- Bootloader and/or firmware update files

9.2 How to check the onboard software version in use on the machine

- a) Turn ON the machine
- b) When the machine is turning ON, it will display for some instance a screen similar to the one shown in the Figure below. On this screen, you can always check the Firmware version (first line under the heading “FW Version”) installed on board the change machine:

Comestergroup

FW Version

05.00.03

SN. 2010000009

Attention:

“##.##.##” represents the software version currently in use.

- c) Wait for the complete boot of the machine to display the usual banknotes or coins acceptance screen

Insert
banknotes

PAY OUT:

2.00€

08.33.00

EN

9.3 How to update Bootloader



In the event the power goes down during the update, the change machine may be damaged. Never remove the memory card or disconnect the power during this step. If the update is not completed successfully and the machine becomes unusable, we suggest you to contact our qualified technicians of the SUZOHAPP after-sales service to fix the problem.



We recommend that you always update the machine software to the latest version in order to achieve maximum benefit from the latest updates and features.



The Bootloader update operation will always involve the removal of any information regarding the machine firmware. At the end of the installation process will always be necessary to proceed restoring the firmware previously installed on Easy PRO, as described later in this chapter.

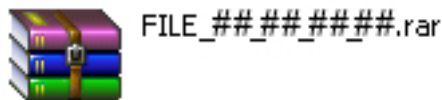
A. How to extract the new Bootloader

- a) Create a new folder on your computer

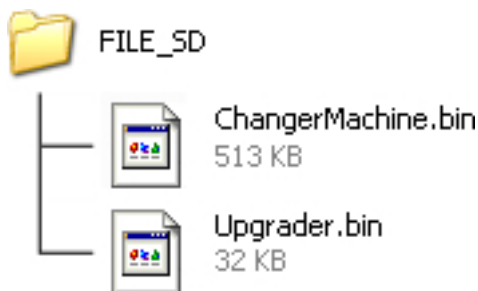
Attention:

If you are using Windows 8, select “Desktop” in the boot screen to get into the desktop mode

- b) Save the file you received from Comestero, with the Easy PRO updates inside, into the folder you have just created in the previous step
- c) Open the folder you have created in the previous step a) and make double-click on the file inside ("FILE_SD_##_##_##_#.rar", where “##_##_##_” represents the Bootloader version) to extract the bootloader in a folder at will



The resulting files and folders hierarchy are described below:



B. How to copy Bootloader on the SD Card

The Bootloader can be copied on the machine memory card using a computer equipped with a card reader or a card slot


- a) Remove the SD Card from its slot on the CPU board of the machine. In the event you haven't the card provide with the machine, you can ask for a new one contacting directly the Comestero after-sales service
- b) Then insert it into your Personal Computer card reader

Windows 8

If Windows displays the message shown in the illustration, click "x" to close the dialog.

HHHHHH (G:)
Tap to choose what happens with removable drives.

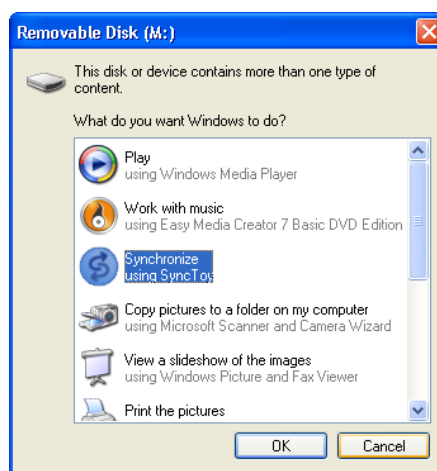
Windows 7 / Windows Vista

Under Windows 7 / Windows Vista, an auto Play dialog may be displayed. Click .



Windows XP

Under Windows XP, a Removable Disk dialog may be displayed. Click **Cancel**.

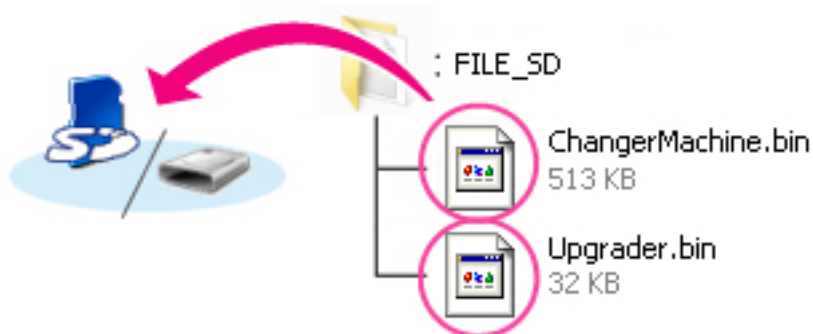


- c) Format the SD Card only in “FAT” mode. Other modes are not valid.

Attention:

all the data on the SD will be deleted when formatting only in the event you are using the SD Card on board the machine, before formatting you must save all of your data on the card to your computer or on another device.

- d) Copy the “ChangerMachine.bin” and “Upgrader.bin” files to the SD Card.



Windows 8

To have both the current folder (the folder containing the Bootloader update) and the memory card folder open at the same time, right click the memory card icon in explorer and select “Open in new window”.

- e) When copying is complete, confirm that the memory card contains the 2 files “ChangerMachine.bin” and “Upgrader.bin”.



Be sure to copy the “ChangerMachine.bin” and “Upgrader.bin” to the root directory of the memory card, without renaming files.

The change machine will not recognize the new Bootloader if it is placed in a folder under the root directory and with other names different than those listed above.

- f) If your computer shows the SD Card as a removable disk, right click the removable disk and select “Eject” from the menu that appears. Remove the SD Card from the card reader or card slot.

C. How to update machine Bootloader

The menus displayed on your machine may differ from those shown in this section.

Attention!

During the update, DO NOT:

- remove the memory card
- turn the machine OFF
- operate any of the change machine controls
- attach or remove devices
- unplug or disconnect the AC adapter

Any of the above actions could cause the Easy PRO machine to become inoperable

- a) Extract the SD Card from your Personal Computer
- b) Turn OFF Easy PRO and make sure the main switch of the unit is in the OFF position
- c) When the change machine is turned OFF, insert the SD Card containing the Bootloader updates inside its CPU slot. Always observe the orientation of the card (the side with manufacturer's label facing up) and make sure to have it properly pushed towards bottom
- d) Turn ON the machine
- e) Once the machine is turned ON, it will display a screen similar to the one shown in the first Figure below. On this screen, you can always check the Bootloader version (first line under the heading "Upgrader Ver 06:00:00") installed on board the change machine
- f) Press one of the 2 external blue button within 5 seconds to start updating



Upgrader Ver. 06.00.00

Old ver: 04.00.00

LOADER

Push Button to start

Upgrading 5

- g) The update will start and a screen, very similar to the one shown in Figure here below, will be displayed. In this way you can always check the percentage of completion of the upgrade (indicated by a progressive counter)



Upgrader Ver. 06.00.00

Old ver: 04.00.00

LOADER

Upgrading 10%

EN

- h) When the update is complete, the change machine will show on screen the message: “Complete! Rebooting”, as shown in the Figure below. At this point the machine will reboot. Wait for the complete rebooting until you will see on display the screen shown in the Figure at point i) below



UPGRADE LOADER

Old Ver: 04.00.00

LOADER

Complete !! Rebooting

- i) If all has been successfully completed, the change machine will show on display the message “Complete !! 100% Pls, remove SD Card and reboot system”, as shown in the Figure below

UPGRADE LOADER**Complete !!
100%****Pls, remove SdCard
and reboot system**

- j) Turn OFF the machine and make sure the main switch of the equipment is in the OFF position
- k) Remove the SD Card containing the Bootloader updates from its slot and proceed with the firmware update as described in the next section called “How to Update Firmware”



Any failure when you restore the machine firmware, after you update the machine Bootloader, will involve the complete block of the equipment until you restore the onboard firmware



If you can't update the machine software for any reason, please contact our after-sales service at the telephone number: (+39) 02 95781111.

9.4 How to update Firmware



In the event the power goes down during the update, the change machine may be damaged. Never remove the memory card or disconnect the power during this step. If the update is not completed successfully and the machine becomes unusable, we suggest you to contact our qualified technicians of the Comestero after-sales service to fix the problem.



We recommend that you always update the machine software to the latest version to achieve maximum benefit from the latest updates and features.

A. How to download and extract the new Firmware

- a) Create a new folder on your computer

Attention:

If you are using Windows 8, select **“Desktop”** in the boot screen to get into the desktop mode

- b) Go to the Easy PRO page on our web site to download the update Firmware file You need



In the event you have no Internet access, you can ask for the necessary files contacting our after-sales service at the following telephone number: (+39) 02 95781111.

- c) Save the file into the folder you have just created in the step a)
d) Open the folder you have created in the previous step a) and make double-click on the file inside (“PRO_line.zip”) to extract the Firmware in a folder at will



PRO_line.zip

The resulting file and folders hierarchy are described below:



PRO_line



ChangerMachine.bin
513 KB

B. How to copy Firmware on the SD Card

The Firmware can be copied on the machine SD Card using a computer equipped with a card reader or a card slot.


- a) Remove the SD Card from its slot on the CPU board of the machine. In the event you haven't the card provided with the machine, you can ask for a new one contacting directly the Comestero after-sales service
b) Then insert the card into your Personal Computer card reader

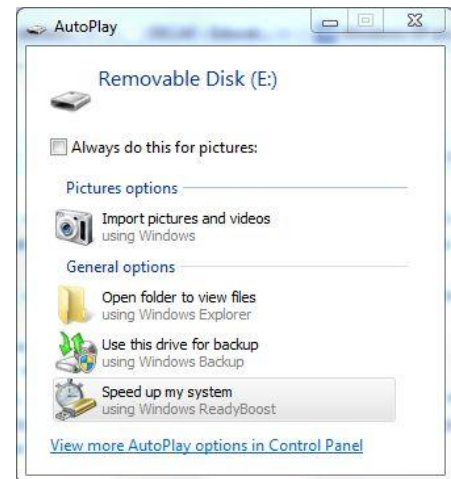
Windows 8

If Windows displays the message shown in the illustration, click "x" to close the dialog.

HHHHHH (G:) **Tap to choose what happens with removable drives.**

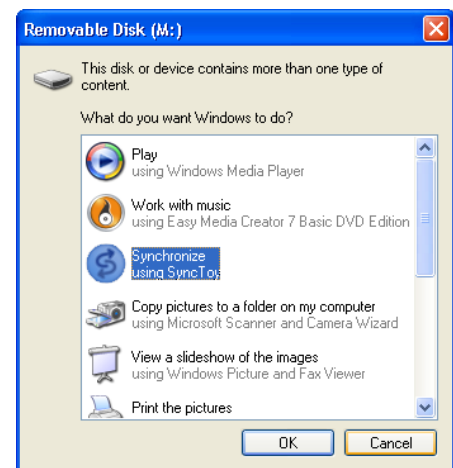
Windows 7 / Windows Vista

Under Windows 7 / Windows Vista, an auto Play dialog may be displayed. Click .



Windows XP

Under windows XP, a Removable Disk dialog may be displayed. Click **Cancel**.



- c) Format the SD Card only in “FAT” mode. Other modes are not valid.

Attention:

all the data on the SD will be deleted when formatting only in the event you are using the SD Card on board the machine, before formatting you must save all of your data on the card to your computer or on another device.

- d) Copy the “ChangerMachine.bin” file to the SD Card.



Windows 8

To have both the current folder (the folder containing the Firmware update) and the memory card folder open at the same time, right click the memory card icon in explorer and select “Open in new window”.

-
- e) When copying is complete, confirm that the memory card contains the file “ChangerMachine.bin”



Be sure to copy the “ChangerMachine.bin” to the root directory of the memory card, without renaming files.

The change machine will not recognize the new Firmware if it is placed in a folder under the root directory and with other names different than that listed above.

- f) If your computer shows the SD Card as a removable disk, right click the removable disk and select “Eject” from the menu that appears. Remove the SD Card from the card reader or card slot

C. How to update the machine Firmware

The menus displayed on your machine may differ from those shown in this section.

EN

Attention!

During the update, DO NOT:

- remove the memory card
- turn the machine OFF
- operate any of the change machine controls
- attach or remove devices
- unplug or disconnect the AC adapter

Any of the above actions could cause the Easy PRO machine to become inoperable.

- Extract the SD Card from your Personal Computer
- Turn OFF Easy PRO and make sure the main switch of the unit is in the OFF position
- When the change machine is turned OFF, insert the SD Card containing the Firmware updates inside its CPU slot. Always observe the orientation of the card (the side with manufacturer's label facing up) and make sure to have it properly pushed towards bottom
- Turn ON the machine
- Once the machine is turned ON, it will display a screen similar to the one shown in the first Figure below
- Press one of the 2 external blue button within 5 seconds to start updating



Upgrader Ver. 06.00.00

Old ver: 04.00.00
New ver: 05.00.00
LINEA PRO
Push Button to start
Upgrading 5

- g) The update will start and a screen, very similar to the one shown in Figure below, will be displayed. In this screen you can always check the percentage of completion of the updating (indicated by a progressive counter)



Upgrader Ver. 06.00.00

Old ver: 04.00.00
New ver: 05.00.00
LINEA PRO
Upgrading 10%

- h) When the update is complete, the change machine will show on screen the message: “Complete! Rebooting”, as shown in the Figure below. At this point the machine will reboot. Wait for the complete rebooting until you will see on display the screen shown in the Figure at point i) below



UPGRADE LOADER

Old Ver: 04.00.00
New Ver: 05.00.00
LINEA PRO
Complete ! Rebooting

- i) If everything has been successfully completed, after a few seconds the machine will reboot automatically and it will display the usual home screen of the Easy PRO, as you can see here below.

Insert banknotes

PAY OUT:
2.00€
08.33.00

- j) Turn OFF the machine and make sure the main switch of the equipment is in the OFF position
- k) Remove the SD Card and insert it into an SD Card reader connected to a computer. Delete the file "ChangerMachine.bin" and re-insert the SD Card into its slot on the CPU board of the change machine

EN



Any failure during the machine Firmware update, will involve the complete block of the equipment until you restore the onboard firmware.



You must delete the "ChangerMachine.bin" file from SD Card after you update the machine Firmware, to avoid that every time you turn ON the machine, it automatically starts the Firmware upgrading.

Never delete the files inside the SD Card, except for the ".bin" file mentioned above. In this way you will preserve all previously accounting, etc ...data saved on the card.



In the event you need help, or for any other problems you could encounter, please contact our after-sales service at the following telephone number : (+39) 02 95781111.

10. Care and maintenance



All maintenance inside the machine must be carried out when the power supply has been switched OFF.



Follow the warnings carefully so that the machine is always in the best operating conditions, preventing dangerous situations or situations which would render the warranty null and void.

10.1 External maintenance and cleaning

Clean the exterior surface of the machine; use a damp cloth with water or a mild cleaning solution.

Do not use aggressive chemical solvents that may damage the finishing of the machine.

Do not dip or expose the machine directly to water or liquids of any nature. Do not use machine with jets of water (hydro-cleaners) to clean the machine.

Periodically check the surface of the machine, taking particular care to the areas that could be dangerous for the user due to normal operating conditions or wilful damage (sharp or bent metal sheets, rust, etc.)

See the “Spare parts” manual to order replacement parts.

10.2 Internal maintenance and cleaning

Clean the machine interior with a damp cloth; use only compressed air to clean the electronic components.

Periodically check the connections of each cable and check that the peripheral connection cables are not frayed or excessively bent.

If any unusual situation is noticed with regard to cables and connectors, immediately replace them according to the “Spare parts” manual.

10.3 Inactivity periods

We recommend turning the machine OFF by means of the main power switch located inside the case for short inactivity periods when the machine will not be used for two or three days. For long inactivity periods, when the machine will not be used for long periods of time, we suggest unplugging the machine from the power grid, removing the power plug from the wall socket.

Protect the machine from dust, covering it with a drape and store it in a dry and ventilated area.

11. Diagnostic and technical support

This section presents the main faults that can be noticed during operations and the corresponding possible solutions in order to minimise or completely eliminate any need for machine shutdown.



If the fault is not among those listed below, or if there is, but the suggested solution does not solve the issue, please call our after-sale service at the following number: (+39) 02/95781111.

Issue	Solution
Empty hopper message although the hopper is apparently loaded.	Make sure the coins level in the hopper is sufficient to cover the metal plates located on the bottom of the coin collection compartment.
	Make sure the connections between the hopper and the hopper slides, are correct. Make sure by pushing the hopper toward the back of the cabinet.
	Clean the metal plates located on the bottom of the coin collection compartment with a metal brush. Then wipe the plates with a soft cloth soaked in alcohol.
The machine is on but the banknote reader does not accept banknotes.	Check there are no banknotes jammed on the bottom of the reader.
	Check the banknotes level in the cash box is not such as to hinder the fall of banknotes at the reader output.
The machine accepts banknotes but does not add them to the credit	Check the banknotes level in the cash box is not such as to hinder the fall of banknotes at the reader output.
	Check the inserted banknote denomination is set up in the banknote value table.
Poor acceptance of banknotes by the reader.	Remove the reader and open it, clean the upper and lower part of the LED sensors with a wet cloth.
	Check the reader closes perfectly.

EN

12. Technical specifications

Dimensions (l x h x w) [mm]: on base:	Change machine: 257x473x353 257x1436x353
Net Weight + base [Kg]:	about 30
Net Weight + Stand [Kg]:	about 30
Power supply [V/Hz]:	230 / 50
Current consumption [VA]:	60
Operating temperature [°C]:	+3 ÷ +50
Coin or token capacity [Euro]: Evolution hopper with extension	0,50 – 1,00 – 2,00 2.400 2.400 2.200
Coin cash box capacity:	1600 (sample coin 1€)

Installed peripherals

Electronic coin validator:	Comestero RM5 HD
Banknote reader:	Innovative Technology NV10
Banknote reader with stacker:	Innovative Technology NV9USB (BCE Certification)

13. Spare parts

Just alike to the parts to be replaced, our spare parts are in compliance with manufacturing specifications, and they guarantee with time optimum performance and reliability, satisfying all industry regulations for which they are designed.



For further information about this spare parts list, please call our after-sales service at the following number: (+39) 02/95781111.

To provide a fastest way to search for spare parts and to facilitate the work of our technicians, it is necessary to provide the following information to the Comestero after-sales service:

- Model, type and serial number of the machine
- Code number, name and quantity of parts you intend to order

The following list applies to all configurations in which the Easy PRO change machine is produced and sold

13.1 Easy PRO general assembly

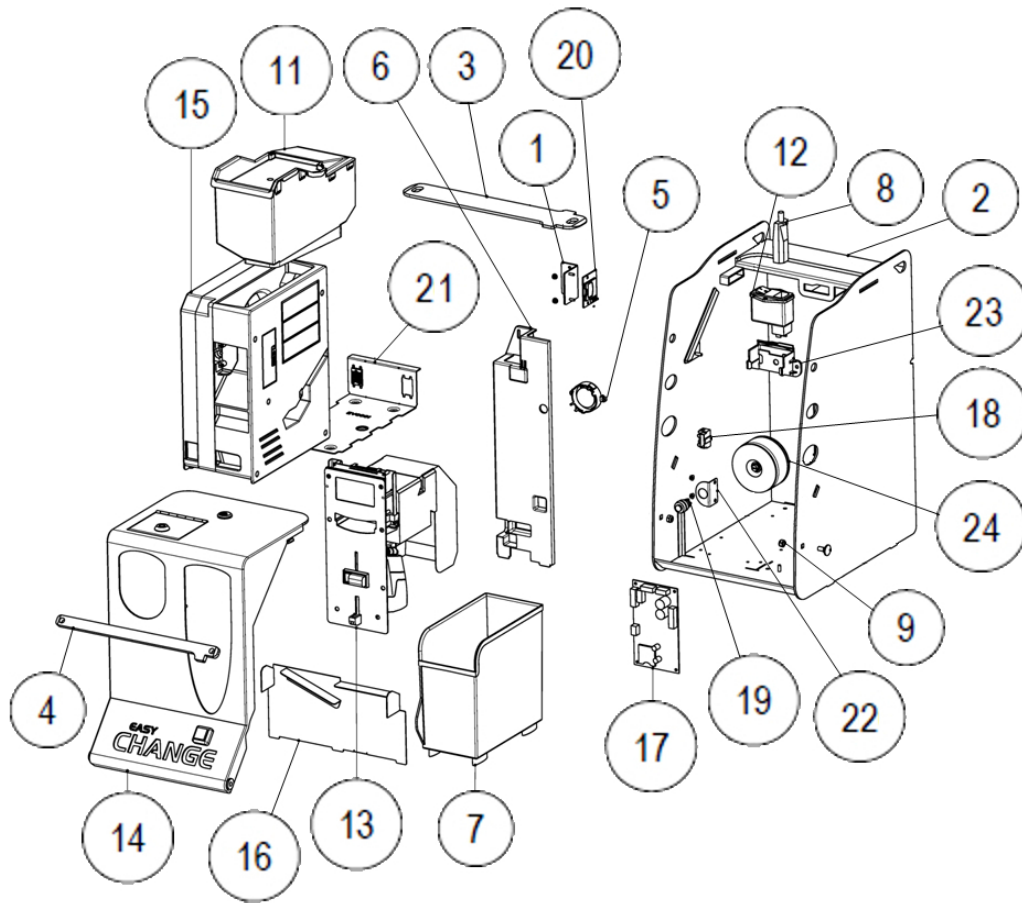


Fig. 7

POSITION	CODE	DESCRIPTION
1	1019-20-0011-A	SD-CARD MOUNTING BRACKET
2	C20---10651-M	CABINET
3	1019-20-0009-B	BEAM OF SAFETY UPPER WIDE
4	1019-20-0010-B	BEAM OF SAFETY INFERIORLY NARROW
5	CA33KPEG182-LAV	BUZZER 100dB 12V 3.0KHz
6	1019-25-0008-A	CARTER BOARD
7	C25---10613	PLASTIC CASH BOX
8	Z/X-CAVORETEITA	MAINS CABLE ITALIAN PLUG
11	C30-1019E-C	HOPPER EASY EXTENSION
12	Z/DC-FILTRO	MAINS FILTER WITH TWO FUSES
13	(See page 54 for details)	NV10 + RM5 HD FRONT GROUP
13	(See page 55 for details)	NV9 FRONT GROUP
14	(See page 53 for details)	DOOR GROUP
15	SZ/EV1001CCTSTD	HOPPER EVOLUTION CCTALK

16	Z/EX-2010666-A	METAL SHEET GET. MK4
17	20514000000047A-EASY	CPU MCB1 BOAR0044
18	C33-M403-SI1	FUSE BOX 1 POLE
19	P/TEST	P/TEST BUTTON
20	1019-60-0001-A	SDEXT1 BOARD + SDEXT2 BOARD + CABLE
21	20201000000021A	ASSEMBLED SLIDE
22	1019-20-0007-A	CLAMP FOR FIXING BUTTON
23	C25---10622	FILTER SUPPORT - plastic
24	1019-40-0001-A	CABLED TRANSFORMER

13.2 Door group

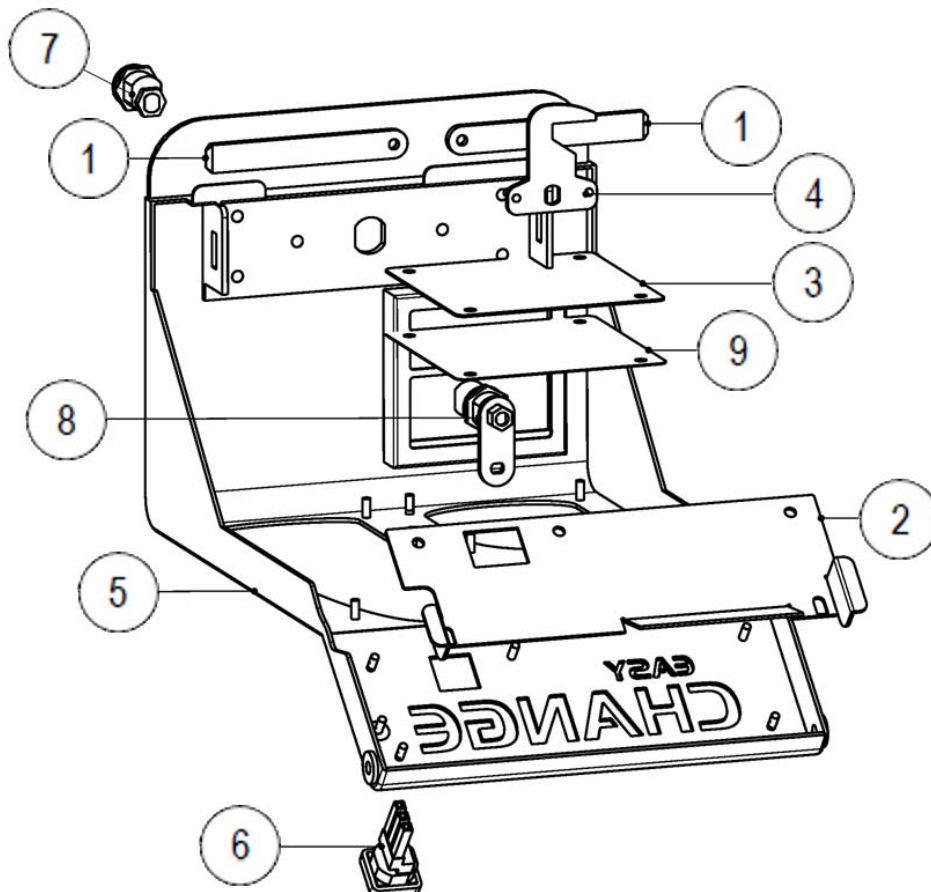


Fig. 8

POSITION	CODE	DESCRIPTION
1	C20---10083-E	BEAM FOR LOCK
2	Z/EX-2010676-G	BOTTOM FOR WRITTEN CHANGE
3	Z/EX-2010654A	METAL SHEET INSTRUCTIONS
4	C20---10626-B	STAKE HOOK
5	C20-10653-M	DOOR - CHANGE EURO EASY
6	300501-00000200	LED HALO BLU EASY BUTTON
7	SMINI6KD/2	MINI 6 LOCK – HEIGHT 20
8	SCT17KD	CAM LOCKS 17 MM KD.
9	Z/EX-2010670A	SLIDE INSTRUCTIONS

13.3 NV10 + RM5 HD front group

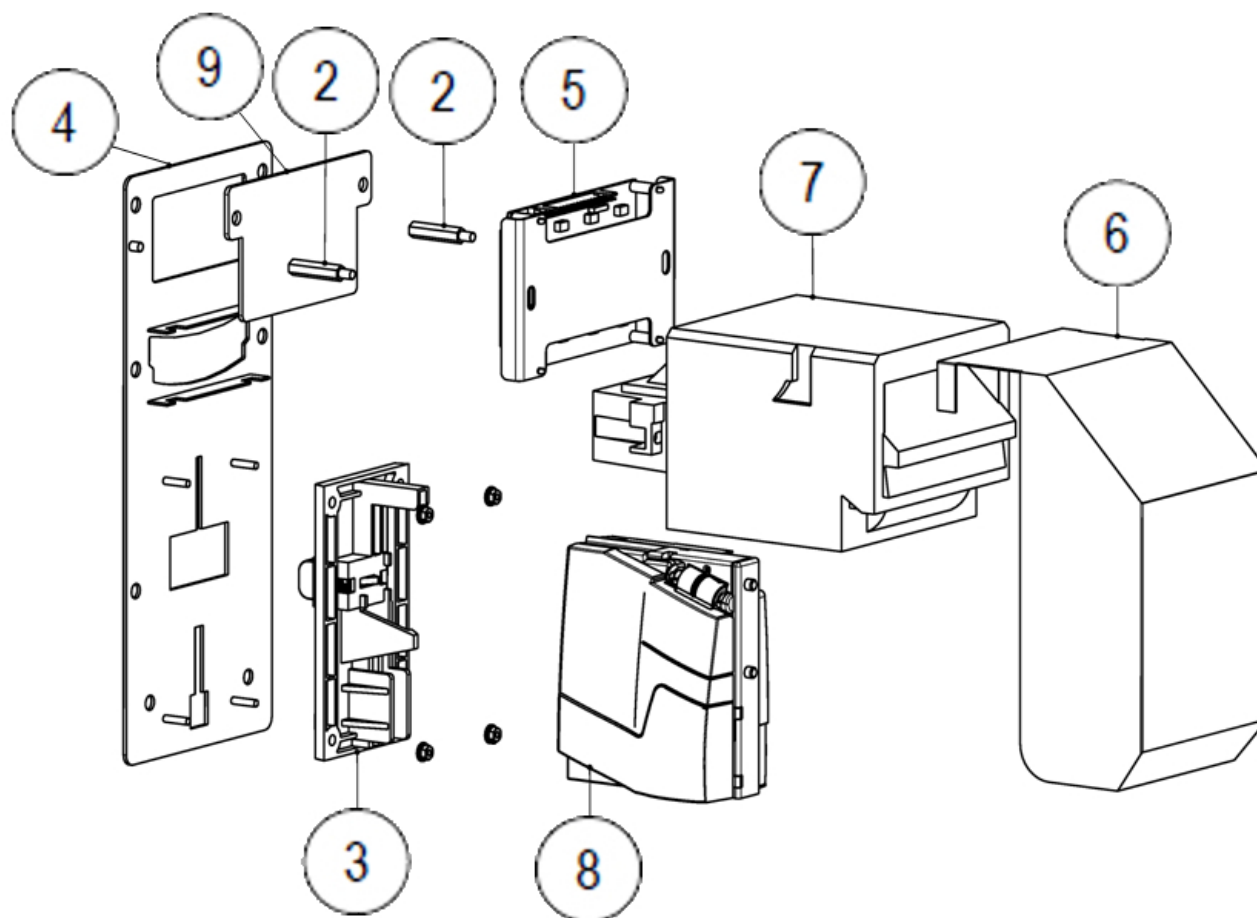


Fig. 9

POSITION	CODE	DESCRIPTION
2	C6-4X25-BN3318	EXAGONAL SPACER
3	F-CM-F1-A	FRONTAL F1 – Blue
4	1019-20-0005-B	NV10-RM5 METALLIC FRONTAL
5	(See page 56 for details)	DISPLAY 128x64 GROUP
6	C20---10632B-A	GUIDE FOR READER
7	LS/NV10/E2-CCT-ENCRY	INNOVATIVE TECHNOLOGY NV10 ccTalk ENCRYPTION BANKNOTES READER
8	GEH101000038	RM5HD F CCTALK FULL
9	1019-20-0004-A	SLIDE DISPLAY

EN

13.4 NV9 front group

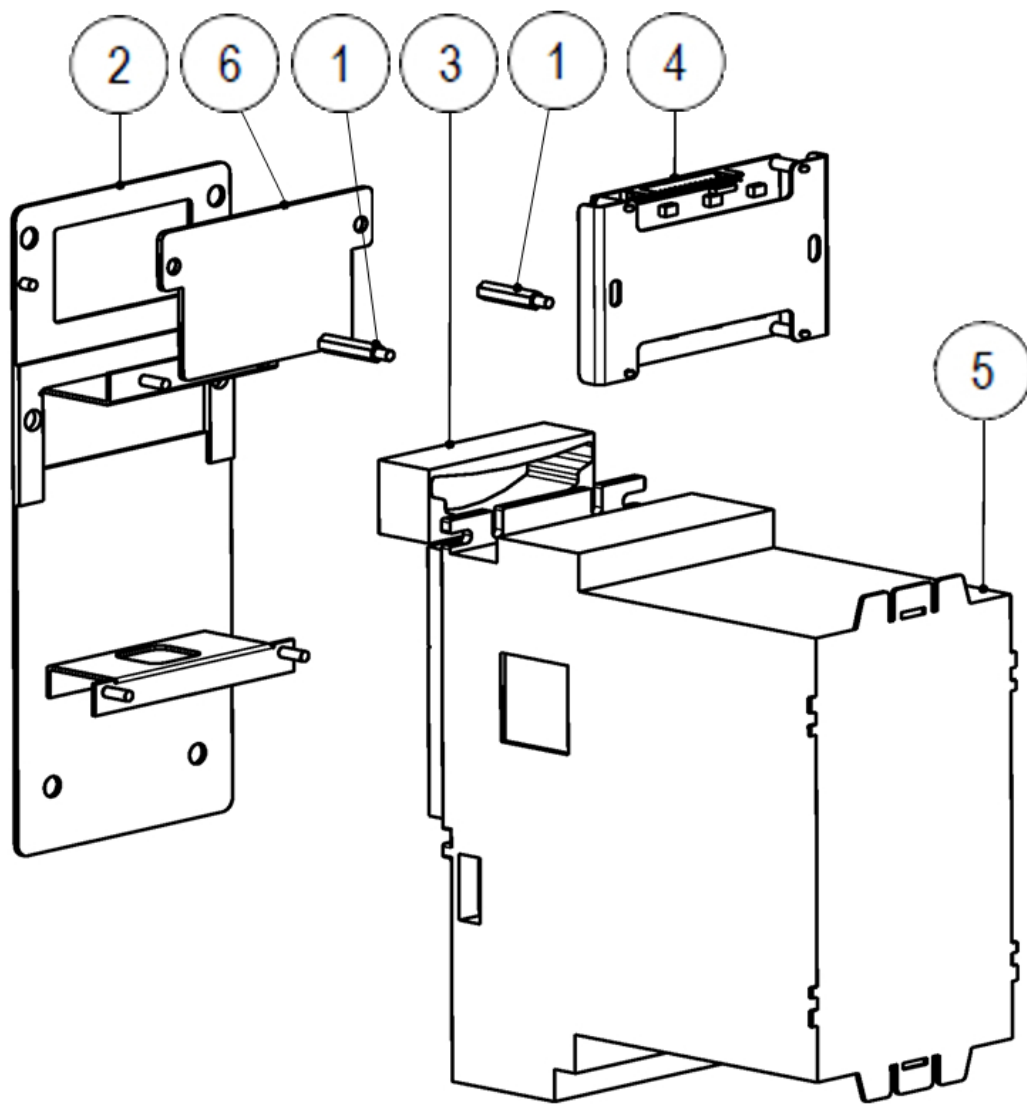


Fig. 10

POSITION	CODE	DESCRIPTION
1	C6-4X25-BN3318	EXAGONAL SPACER
2	1019-20-0006-B	NV9 DISPLAY METALLIC FRONTAL
3	LS/FRON/PA191	FRONTAL FOR NV9 READER
4	(See page 56 for details)	DISPLAY 128x64 GROUP
5	Z/NV9-CCT-V-STK	READER NV9 CCT WITH STACKER
6	1019-20-0004-A	SLIDE DISPLAY 128x64

13.5 Display group

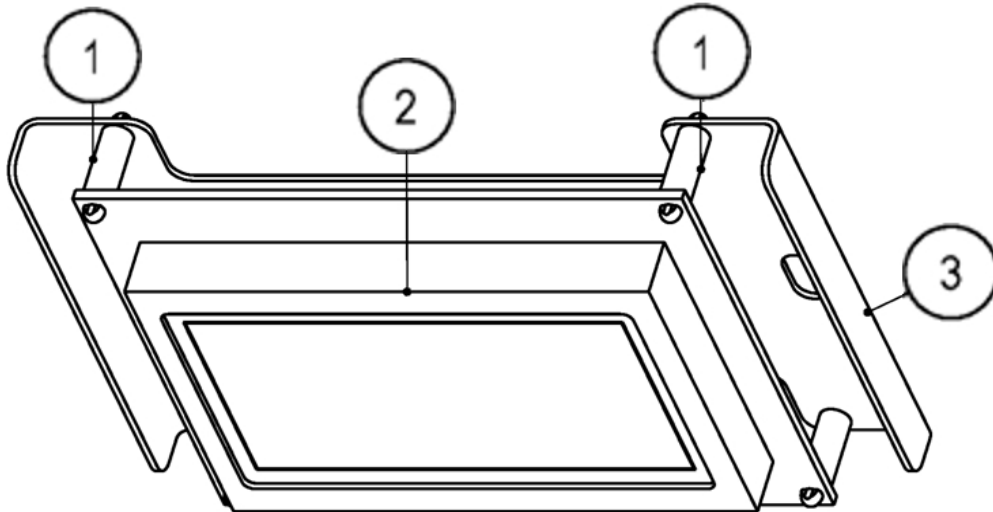


Fig. 11

EN

POSITION	CODE	DESCRIPTION
1	C7-MDLSP112M01	SPACER RICHCO MDLSP-1-12M-01
2	200515000000030	ASSEMBLED GRAPHICS LCD 128X64
3	1019-20-0003-B	CLAMP TO FIX THE DISPLAY 128x64

13.6 Silkscreen



Fig. 12

13.7 Cover caps

CODE	DESCRIPTION
Z/EX-2010477-C	RM5 HOLE COVER
C20---10664	NV10 HOLE COVER

13.8 Cables

CODE	DESCRIPTION
Z/X-CAVOH05VWF	ENGLISH PLUG SOCKET CEE
Z/X-CAVORETESCK	POWER CORD SOCKET SCHUKO
1019-40-0001-A	CABLED TRANSFORMER 60 VA
1019-40-0002-B	EASY PRO DISPLAY CABLE
1019-40-0005-A	CPU CABLE SLIDE EASY
1019-40-0009-A	EASY ALARM CABLE
1019-40-0011-B	EASY PRO ASSEMBLED CABLES
C4-22-11599	GROUND CABLE FILTER – CABINET
C4-GLC-300-063B	GROUND DOOR – CABINET
1000-40-0036-A	ADAPTER EASY/DUAL/JOLLY/TWIN PRO

14. Appendixes

14.1 Decommissioning and disposal

At the end of its life the product must be decommissioned and sent to a disposal centre.

Remove the machine from its installation place, empty all coins and remove the power cable. **Contact Comestero to collect the decommissioned machine. Call the following telephone number: (+39) 02 95781111.**

It is mandatory to dispose the machine pursuant to Legislative Decree 25/07/2005 no. 151.



Please read the following information carefully.

EN

Since December 31, 2006, precise criteria have been established with regard to the Disposal of Waste Electronic and Electrical Equipment (WEEE), with the purpose of protecting the environment.

These machines fall within the scope of legislative decree 151/2005 annex 1B article 2 section 1, since they are:

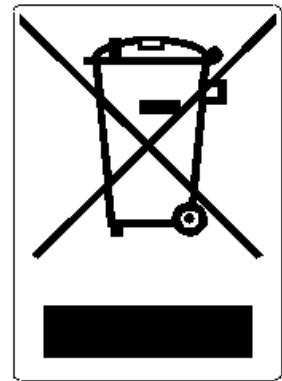
7.6 Coin / token machines

10.2 Automatic dispensers of cash or products

In brief:

- These machines must not be disposed of as normal waste but rather be separately collected.
- Dealers will collect used machines for free, then they will send them to specialised collection centres so that they can be correctly disassembled and any reusable material can be recycled.
- Collection centres for waste electronic and electrical equipment (WEEE) have been created. Users can return used machines to their dealers when a new equivalent machine is purchased.

- These machines or their parts are potentially harmful for the environment and human health if used incorrectly or if not disposed of pursuant to the present procedure, due to some substances being present in the electronic components.
- The symbol representing a crossed-out trash bin, well visible on these machines, means without doubts that the machine has entered the market after August 13, 2005 and that it must be collected separately.



The following sanctions are established if this waste is disposed of unlawfully:

1. Pursuant to article 6, section 1, letter b), a dealer that does not accept the return of a used electrical or electronic equipment for free will incur a monetary sanction of Euro 150 to Euro 400 for each device that is not accepted or is accepted for a fee.
2. A manufacturer that does not organise a separate collection system for professional WEEE as per article 6 - section 3 and a system for returning and sending, treating and recycling the WEEE, pursuant to articles 9 - section 1 and 9 - section 1, 11 - section 1 and 12, sections 1, 2 and 3, without prejudice to the agreements signed pursuant to article 12 - section 6, will incur a monetary sanction of Euro 30,000 to Euro 100,000.
3. A manufacturer that after August 13, 2005 does not provide the financial guarantee established by article 11 - section 2 or 12 - section 4 when the electrical or electronic device enters the market, will incur a monetary sanction of Euro 200 to Euro 1,000 for each device which enters the market.
4. A manufacturer that does not provide instructions for the use of WEE pursuant to article 13 - section 1 will incur a monetary sanction of Euro 200 to Euro 5,000.
5. A manufacturer that, within one year from the launch on the market of any new WEE, does not provide the instructions pursuant to article 13 - section 3 to re-use centres and treatment and recycling plants will incur a monetary sanction of Euro 5,000 to Euro 30,000.
6. A manufacturer that after August 13, 2005 launches on the market WEE without the identification or symbol set out by article 13 - sections 4 and 5 will incur a monetary sanction of Euro 200 to Euro 1,000 for each device that enters the market. The same monetary sanction applies if the identification or symbol is not conforming with the requirements set out by article 13, sections 4 and 5.
7. A manufacturer that launches on the market a WEE without being registered with the Chamber of Commerce pursuant to article 14 - section 2 will incur a monetary sanction of Euro 30,000 to Euro 100,000.
8. A manufacturer that does not communicate the information established by article 13, sections 4 3 5 to the national register of subjects obliged to dispose of WEEE within the terms established by article 13, section 8 can incur penalties.
9. With the exceptions set out by article 5 section 2, everyone that after July 1, 2006 launches on the market WEE containing substances listed in article 5, section 1 or

further substances identified pursuant to article 18, section 1, will incur a monetary sanction of Euro 50 to Euro 500 for each device that enters the market or of Euro 30,000 to Euro 100,000.

**EMA Headquarters**

Antonie van Leeuwenhoekstraat 9
3261LT Oud-Bijerland The Netherlands
P +31 (0) 186 643333
F +31 (0) 186 643322
Info.nl@suzohapp.com

NCS Headquarters

1743 Linneman Rd
Mount Prospect IL 60056 USA
P +1 (847) 593 6130
F +1 (800) 593 4277
info@suzohapp.com

APA Headquarters

44-48 Rocco Drive, Scoresby
Victoria Australia 3179
P +61 3 9757 5000
F +61 3 9763 7265
info@suzohapp.com.au

suzohapp.com

For more information:**SuzoHapp Netherlands B.V.**

Antonie Van Leeuwenhoekstraat 9
3261 LT Oud-Beijerland - The Netherlands
Phone: (+31) 186 64 33 33 - Fax: (+31) 186 64 33 32
sales.nl@suzohapp.com